



P.L. : 1013-H01

Effective
Replaces

November 2020
June 2020

PARTS LIST

PUMPS

H-FLO 50 S - H-FLO 65 S - H-FLO 65 HP

Keep this parts lists with Installation, Operation and Maintenance Instructions.

To order the required spare parts, indicate the desired Reference(s).

- ◆ Sets of parts or parts available to order.

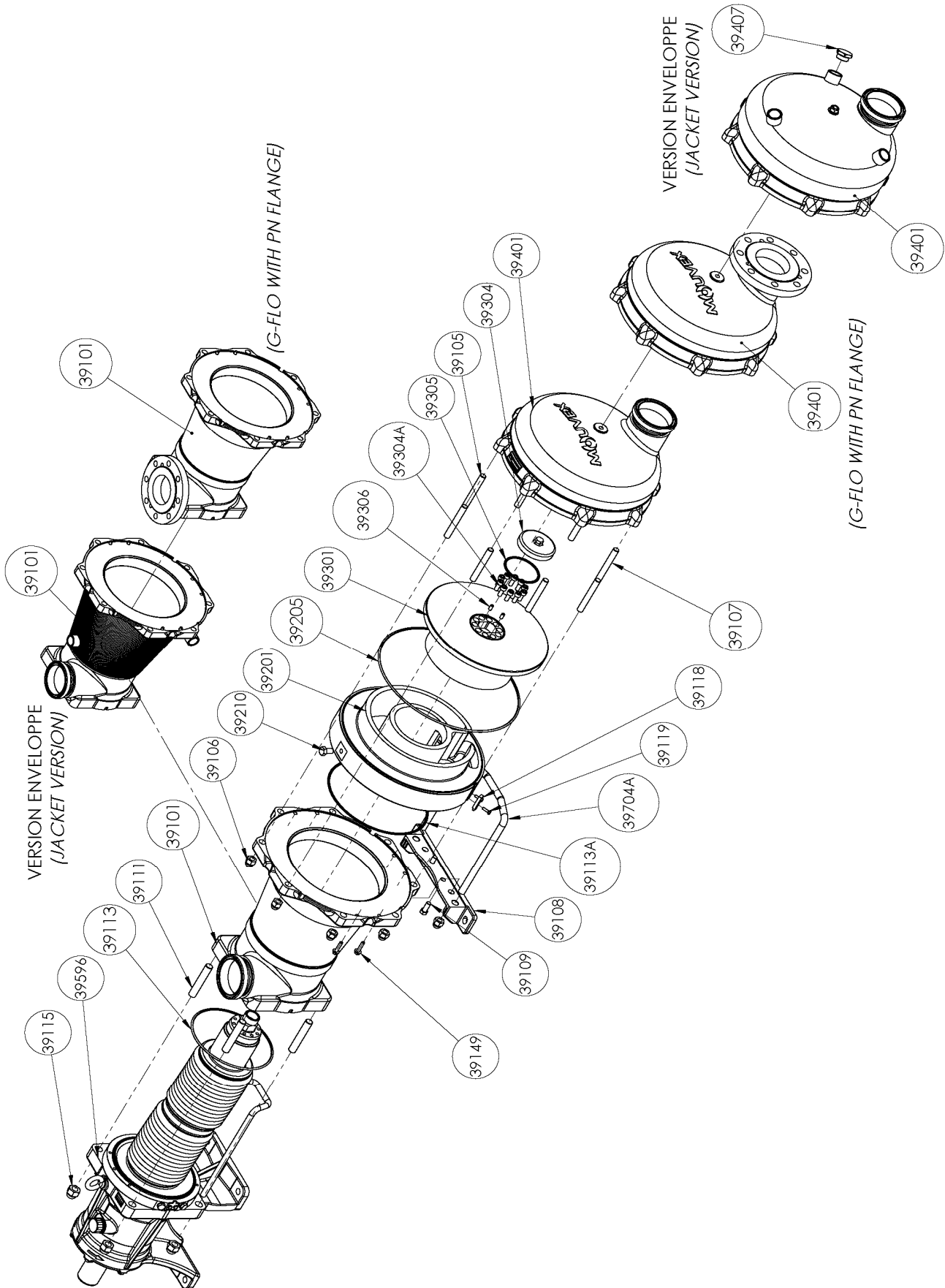
CVT : FEP encapsulated FKM

Z.I. la Plaine des Isles - 2 rue des Caillottes F-89000 AUXERRE - France

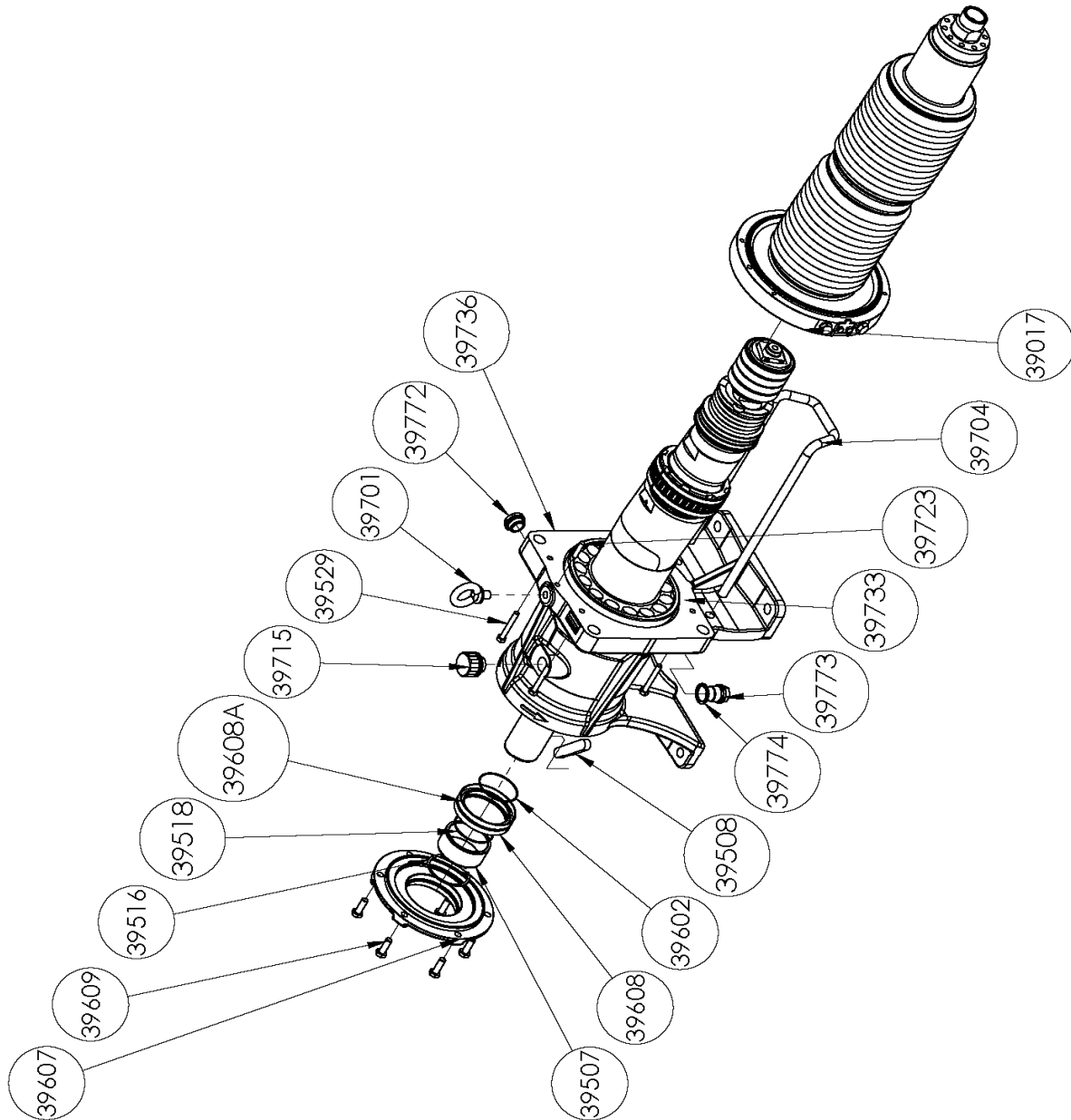
Tel : +33 (0)3 86 49 86 30 • Fax : +33 (0)3 86 49 87 17
contact.mouvex@psgdover.com • www.mouvex.com

H-FLO 50 S - H-FLO 65 S - H-FLO 65 HP

Standard & Jacketed pump



H-FLO 50 S - H-FLO 65 S - H-FLO 65 HP Transmission



H-FLO 50 S

* 1, 2, 4... : Quantity in equipment - (1), (2), (4)... : Quantity in kit

Item	Available	Description	Qty*	Ref.	Maintenance kit	Wear part
39100	◆	MAIN BODY H FLO 50- CONNECTIONS CLAMP ASME-BPE	1	AUX320212		
39100	◆	MAIN BODY H FLO 50- CONNECTIONS CLAMP ISO 2852	1	AUX320213		
39100	◆	MAIN BODY H FLO 50- CONNECTIONS DIN 11851	1	AUX320211		
39100	◆	MAIN BODY H FLO 50- CONNECTIONS SMS	1	AUX320210		
39100	◆	MAIN BODY H FLO 50- CONNECTIONS DIN 11864	1	AUX320214		
39101		MAIN BODY	(1)			
39108		FOOT	(1)			
39109		SCREW	(2)			
39118		INDEXER	(1)			
39119		SCREW	(2)			
39704A		BRACKET	(1)			
39110	◆	SCREWS SET FOR MAIN BODY	1	AUX320236		
39105		STUD	(6)			
39106		BLIND NUT	(8)			
39107		STUD	(2)			
39111		STUD	(4)			
39115		BLIND NUT	(4)			
39200	◆	SET CYLINDER_PISTON	1	AUX320209	■	●
39201		CYLINDER	(1)			
39210		SCREW	(1)			
39301		PISTON	(1)			●
39304	◆	PISTON NUT	1	AUX240325		●
39304A		SCREW	(10)			
39306		SCREW	(2)			
39206	◆	SET OF CVT 'O' RING SEALS	1	AUX320186	■	
39206	◆	SET OF EPDM CE1935/2004 'O' RING SEALS	1	AUX320187	■	
39206	◆	SET OF FKM CE1935/2004 'O' RING SEALS	1	AUX320185	■	
39113		SEAL	(1)			●
39113A		SEAL	(1)			●
39205		SEAL	(1)			●
39305		SEAL	(2)			●
39401	◆	FRONT COVER H FLO 50 CONNECTION CLAMP ASME BPE-2009	1	AUX320230		
39401	◆	FRONT COVER H FLO 50 CONNECTION DIN11864	1	AUX320232		
39401	◆	FRONT COVER H FLO 50 CONNECTION CLAMP ISO 2852	1	AUX320231		
39401	◆	FRONT COVER H FLO 50 CONNECTION DIN11851	1	AUX320229		
39401	◆	FRONT COVER H FLO 50 CONNECTION SMS	1	AUX320228		

H-FLO 50 S

* 1, 2, 4... : Quantity in equipment - (1), (2), (4)... : Quantity in kit

Item	Available	Description	Qty*	Ref.	Maintenance kit	Wear part
39596	◆	COMPLETE TRANSMISSION : WITHOUT BELLOWS MONITORING SYSTEM	1	AUX320115	■	●
		WITH PRESSURE SWITCH BELLOWS MONITORING SYSTEM :				
39596	◆	WITH BMS ON THE LEFT	1	AUX320552	■	●
39596	◆	WITH BMS ON THE RIGHT	1	AUX320553	■	●
39596	◆	WITH BMS ATEX ON THE LEFT	1	AUX320556	■	●
39596	◆	WITH BMS ATEX ON THE RIGHT	1	AUX320557	■	●
39008A	◆	SET PLUGS_LIFTING EYE BOLTS	1	AUX319682		
39701		LIFTING EYE BOLTS	(1)			
39715	◆	BREATHER	1	AUX239151		●
39772		OIL LEVEL INDICATOR	(1)			
39773		PLUG	(1)			
39774		SEAL WASHER	(1)			●
39009A	◆	BEARING GASKETS _ RING SET	1	AUX320116		
39498		BUSHING	(1)			
39507		SEAL RING	(1)			●
39518		SEAL	(1)			●
39602		SEAL	(1)			
39608		LIP SEAL	(1)			●
39608A		LIP SEAL	(1)			●
39733		O-RING	(1)			●
39013		RADIAL SPRING KIT FOR SHAFT TRANSMISSION	(1)			
39016	◆	SCREWS SET FOR BELLOWS	1	AUX319677		
39529		SCREW	(4)			
39723		PIN	(1)			
39017	◆	SET BELLOWS	1	AUX320114		
39018		BEARINGS KIT FOR TRANSMISSION	(1)			
39500		SHAFT	(1)			
39508		KEY	(1)			
39607		COVER	(1)			
39609		SCREW	(6)			
39704		MAIN BODY SUPPORT	(1)			
39736		BEARING	(1)			

H-FLO 65 S

* 1, 2, 4... : Quantity in equipment - (1), (2), (4)... : Quantity in kit

Item	Available	Description	Qty*	Ref.	Maintenance kit	Wear part
39100	◆	MAIN BODY H FLO 65- CONNECTIONS CLAMP ASME-BPE	1	AUX320131		
39100	◆	MAIN BODY H FLO 65- CONNECTIONS CLAMP ISO 2852	1	AUX320169		
39100	◆	MAIN BODY H FLO 65- CONNECTIONS DIN 11851	1	AUX320129		
39100	◆	MAIN BODY H FLO 65- CONNECTIONS SMS	1	AUX320127		
39100	◆	MAIN BODY H FLO 65- CONNECTIONS DIN 11864	1	AUX320172		
39101		MAIN BODY	(1)			
39108		FOOT	(1)			
39109		SCREW	(2)			
39118		INDEXER	(1)			
39119		SCREW	(2)			
39704A		BRACKET	(1)			
39110	◆	SCREWS SET FOR MAIN BODY	1	AUX319937		
39105		STUD	(6)			
39106		BLIND NUT	(8)			
39107		STUD	(2)			
39111		STUD	(4)			
39115		BLIND NUT	(4)			
39200	◆	SET CYLINDER_PISTON	1	AUX319913	■	●
39201		CYLINDER	(1)			●
39210		SCREW	(1)			
39301		PISTON	(1)			●
39304	◆	PISTON NUT	1	AUX239099		●
39304A		SCREW	(10)			
39306		SCREW	(2)			
39206	◆	SET OF CVT 'O' RING SEALS	1	AUX319929	■	
39206	◆	SET OF EPDM CE1935/2004 'O' RING SEALS	1	AUX319950	■	
39206	◆	SET OF FKM CE1935/2004 'O' RING SEALS	1	AUX319945	■	
39113		SEAL	(1)			●
39113A		SEAL	(1)			●
39205		SEAL	(1)			●
39305		SEAL	(2)			●
39401	◆	FRONT COVER H FLO 65 CONNECTION DIN11864	1	AUX320174		
39401	◆	FRONT COVER H FLO 65 CONNECTION CLAMP ISO 2852	1	AUX320171		
39401	◆	FRONT COVER H FLO 65 CONNECTION CLAMP ASME BPE-2009	1	AUX320135		
39401	◆	FRONT COVER H FLO 65 CONNECTION DIN11851	1	AUX320134		
39401	◆	FRONT COVER H FLO 65 CONNECTION SMS	1	AUX320133		

H-FLO 65 S

* 1, 2, 4... : Quantity in equipment - (1), (2), (4)... : Quantity in kit

Item	Available	Description	Qty*	Ref.	Maintenance kit	Wear part
39596	◆	COMPLETE TRANSMISSION	1	AUX319662	■	●
39599		TRANSMISSION	(1)			
39008A	◆	SET PLUGS_LIFTING EYE BOLTS	1	AUX319682		
39701		LIFTING EYE BOLTS	(1)			
39715	◆	BREATHER	1	AUX239151		●
39772		OIL LEVEL INDICATOR	(1)			
39773		PLUG	(1)			
39774		SEAL WASHER	(1)			●
39009A	◆	BEARING GASKETS _ RING SET	1	AUX319683		●
39507		INTERNAL RING	(1)			●
39516		CIRCLIPS	(1)			
39518		O-RING FKM	(1)			●
39602		SEAL	(1)			
39608		LIP SEAL	(1)			●
39608A		LIP SEAL	(1)			●
39733		SEAL	(1)			●
39013		RADIAL SPRING KIT FOR SHAFT TRANSMISSION	(1)			
39016	◆	SCREWS SET FOR BELLOWS	1	AUX319677		
39529		SCREW	(4)			
39723		PIN	(1)			
39017	◆	SET BELLOWS	1	AUX319679		
39018		BEARINGS KIT FOR TRANSMISSION	(1)			
39500		SHAFT COMPLETE	(1)			
39508		KEY	(1)			
39607		BEARING COVER	(1)			
39609		SCREW	(6)			
39704		MAIN BODY SUPPORT	(1)			
39736		BEARING	(1)			

H-FLO 65 HP

* 1, 2, 4... : Quantity in equipment - (1), (2), (4)... : Quantity in kit

Item	Available	Description	Qty*	Ref.	Maintenance kit	Wear part
39100	◆	MAIN BODY H FLO 65- CONNECTIONS CLAMP ASME-BPE	1	AUX320131		
39100	◆	MAIN BODY H FLO 65- CONNECTIONS CLAMP ISO 2852	1	AUX320169		
39100	◆	MAIN BODY H FLO 65- CONNECTIONS DIN 11851	1	AUX320129		
39100	◆	MAIN BODY H FLO 65- CONNECTIONS SMS	1	AUX320127		
39100	◆	MAIN BODY H FLO 65- CONNECTIONS DIN 11864	1	AUX320172		
39101		MAIN BODY	(1)			
39108		FOOT	(1)			
39109		SCREW	(2)			
39118		INDEXER	(1)			
39119		SCREW	(2)			
39704A		BRACKET	(1)			
39110	◆	SCREWS SET FOR MAIN BODY	1	AUX319937		
39105		STUD	(6)			
39106		BLIND NUT	(8)			
39107		STUD	(2)			
39111		STUD	(4)			
39115		BLIND NUT	(4)			
39200	◆	SET CYLINDER_PISTON	1	AUX319947	■	●
39201		CYLINDER	(1)			●
39210		SCREW	(1)			
39301		PISTON	(1)			●
39304	◆	PISTON NUT	1	AUX239099		●
39304A		SCREW	(10)			
39306		SCREW	(2)			
39206	◆	SET OF CVT 'O' RING SEALS	1	AUX319929	■	
39206	◆	SET OF EPDM CE1935/2004 'O' RING SEALS	1	AUX319950	■	
39206	◆	SET OF FKM CE1935/2004 'O' RING SEALS	1	AUX319945	■	
39113		SEAL	(1)			●
39113A		SEAL	(1)			●
39205		SEAL	(1)			●
39305		SEAL	(2)			●
39401	◆	FRONT COVER H FLO 65 CONNECTION DIN11864	1	AUX320174		
39401	◆	FRONT COVER H FLO 65 CONNECTION CLAMP ISO 2852	1	AUX320171		
39401	◆	FRONT COVER H FLO 65 CONNECTION CLAMP ASME BPE-2009	1	AUX320135		
39401	◆	FRONT COVER H FLO 65 CONNECTION DIN11851	1	AUX320134		
39401	◆	FRONT COVER H FLO 65 CONNECTION SMS	1	AUX320133		

H-FLO 65 HP

* 1, 2, 4... : Quantity in equipment - (1), (2), (4)... : Quantity in kit

Item	Available	Description	Qty*	Ref.	Maintenance kit	Wear part
39596	◆	COMPLETE TRANSMISSION	1	AUX319662	■	●
39599		TRANSMISSION	(1)			
39008A	◆	SET PLUGS_LIFTING EYE BOLTS	1	AUX319682		
39701		LIFTING EYE BOLTS	(1)			
39715	◆	BREATHER	1	AUX239151		●
39772		OIL LEVEL INDICATOR	(1)			
39773		PLUG	(1)			
39774		SEAL WASHER	(1)			●
39009A	◆	BEARING GASKETS _ RING SET	1	AUX319683		●
39507		INTERNAL RING	(1)			●
39516		CIRCLIPS	(1)			
39518		O-RING FKM	(1)			●
39602		SEAL	(1)			
39608		LIP SEAL	(1)			●
39608A		LIP SEAL	(1)			●
39733		SEAL	(1)			●
39013		RADIAL SPRING KIT FOR SHAFT TRANSMISSION	(1)			
39016	◆	SCREWS SET FOR BELLOWS	1	AUX319677		
39529		SCREW	(4)			
39723		PIN	(1)			
39017	◆	SET BELLOWS	1	AUX319679		
39018		BEARINGS KIT FOR TRANSMISSION	(1)			
39500		SHAFT COMPLETE	(1)			
39508		KEY	(1)			
39607		BEARING COVER	(1)			
39609		SCREW	(6)			
39704		MAIN BODY SUPPORT	(1)			
39736		BEARING	(1)			