



P.L. : 1013-D01

Effective
Replaces

November 2020
June 2020

PARTS LIST

PUMPS

G-FLO 50 S - G-FLO 65 S - G-FLO 65 HP

Keep this parts lists with Installation, Operation and Maintenance Instructions.

To order the required spare parts, indicate the desired Reference(s).

- ◆ Sets of parts or parts available to order.

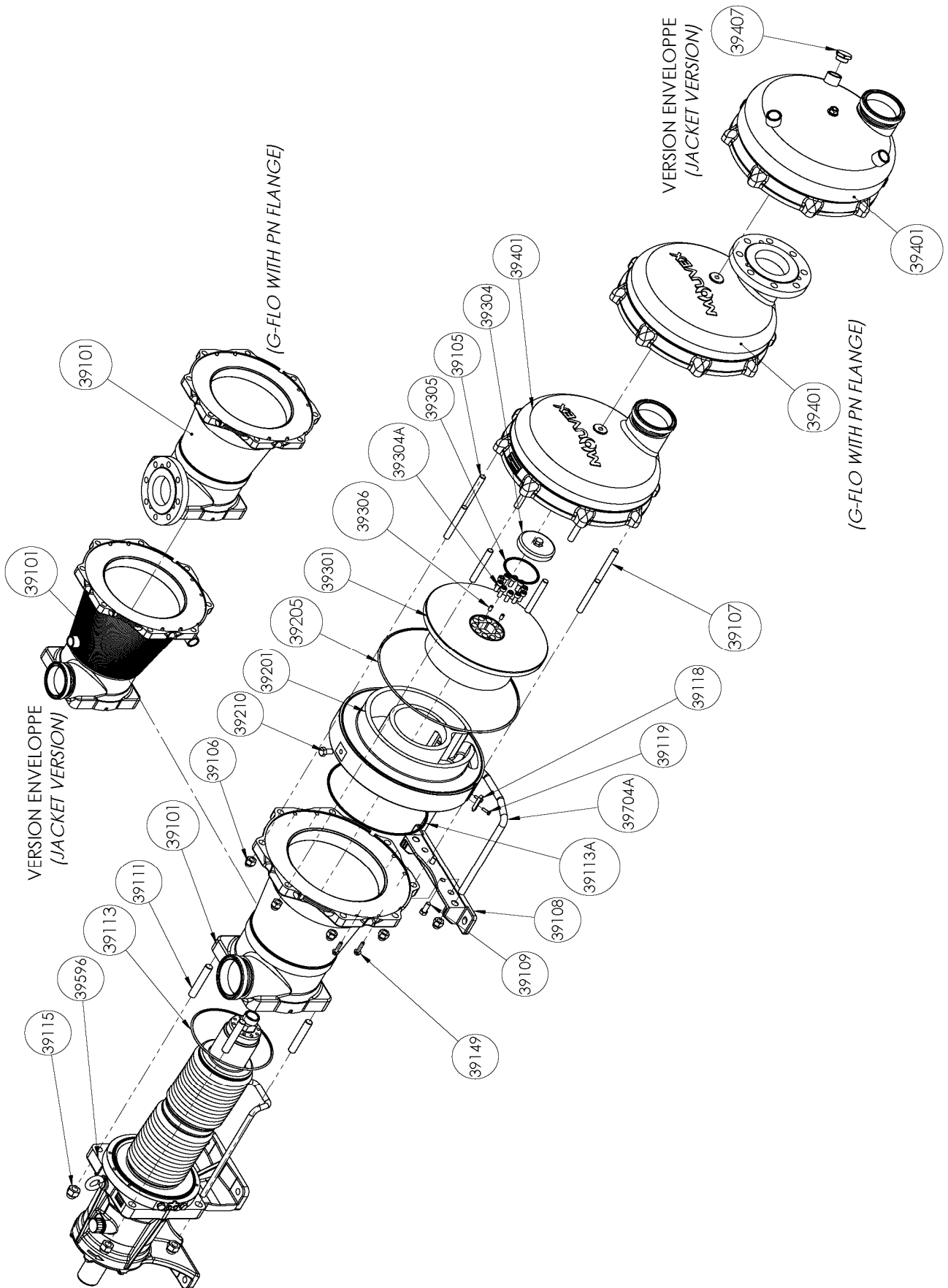
CVT : FEP encapsulated FKM

Z.I. la Plaine des Isles - 2 rue des Caillottes F-89000 AUXERRE - France

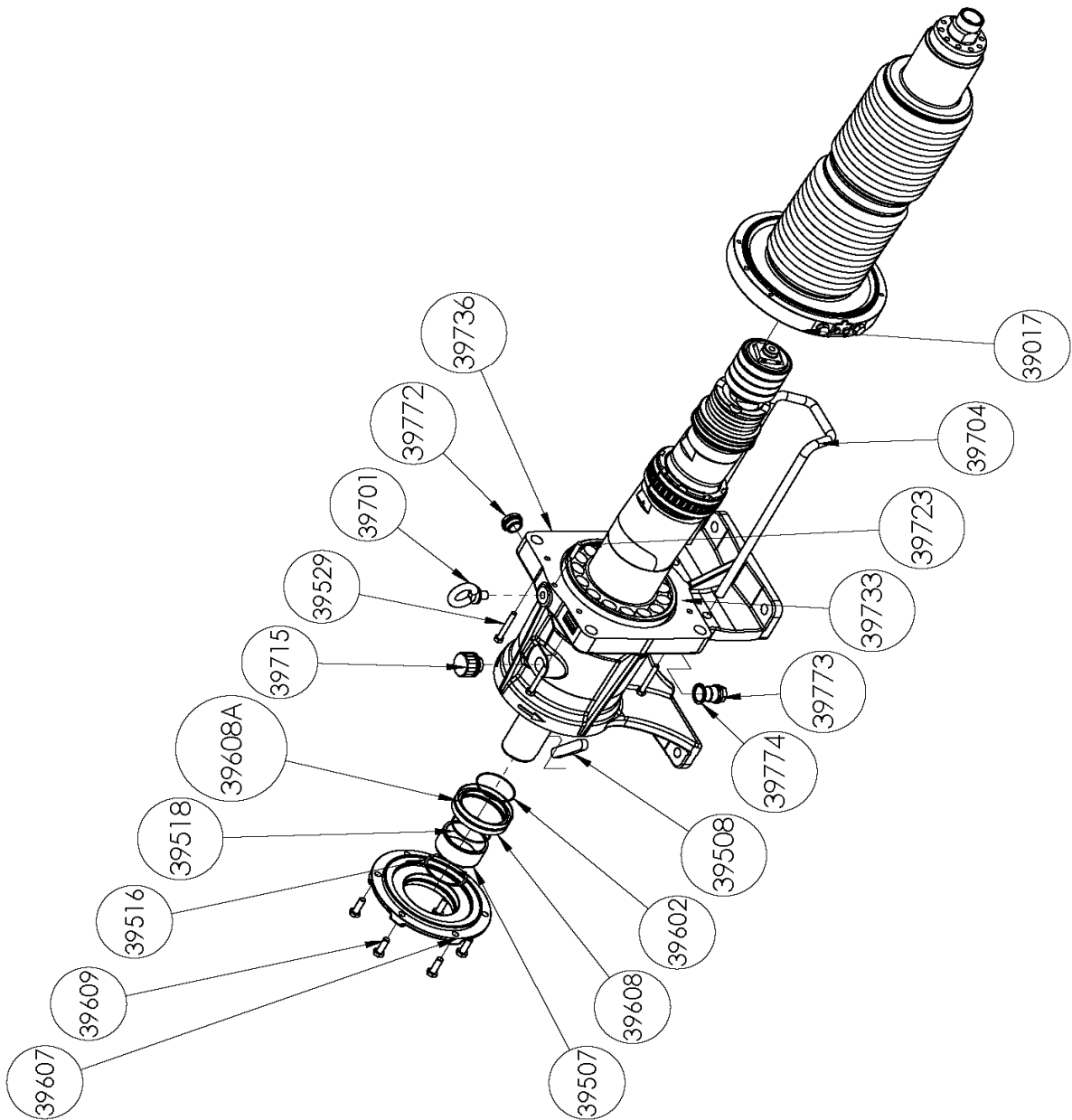
Tel : +33 (0)3 86 49 86 30 • Fax : +33 (0)3 86 49 87 17
contact.mouvex@psgdover.com • www.mouvex.com

G-FLO 50 S - G-FLO 65 S - G-FLO 65 HP

Standard & Jacketed pump



G-FLO 50 S - G-FLO 65 S - G-FLO 65 HP Transmission



G-FLO 50 S

* 1, 2, 4... : Quantity in equipment - (1), (2), (4)... : Quantity in kit

| Item | Available | Description | Qty* | Ref. | Maintenance kit | Wear part |
|--------------|-----------|---|----------|------------------|-----------------|-----------|
| 39100 | ◆ | MAIN BODY H FLO 65 | 1 | AUX320234 | | |
| 39101 | | MAIN BODY | (1) | | | |
| 39108 | | FOOT | (1) | | | |
| 39109 | | SCREW | (2) | | | |
| 39118 | | INDEXER | (1) | | | |
| 39119 | | SCREW | (2) | | | |
| 39704A | | BRACKET | (1) | | | |
| 39110 | ◆ | SCREWS SET FOR MAIN BODY | 1 | AUX320236 | | |
| 39105 | | STUD | (6) | | | |
| 39106 | | BLIND NUT | (8) | | | |
| 39107 | | STUD | (2) | | | |
| 39111 | | STUD | (4) | | | |
| 39115 | | BLIND NUT | (4) | | | |
| 39410 | ◆ | KIT FLANGES PN16 | 1 | AUX319926 | | |
| 39410 | ◆ | KIT FLANGES PN20 | 1 | AUX319958 | | |
| 39136 | | SCREW | (6) | | | |
| 39148 | | ROD | (2) | | | |
| 39414 | | FLANGE | (2) | | | |
| 39200 | ◆ | SET CYLINDER_PISTON | 1 | AUX320209 | ■ | |
| 39201 | | CYLINDER | (1) | | | ● |
| 39210 | | SCREW | (1) | | | |
| 39301 | | PISTON | (1) | | | ● |
| 39304 | ◆ | PISTON NUT | 1 | AUX240325 | | ● |
| 39304A | | SCREW | (10) | | | |
| 39306 | | SCREW | (2) | | | |
| 39206 | ◆ | SET OF CVT 'O' RING SEALS | 1 | AUX320186 | ■ | |
| 39206 | ◆ | SET OF EPDM CE1935/2004 'O' RING SEALS | 1 | AUX320187 | ■ | |
| 39206 | ◆ | SET OF FKM CE1935/2004 'O' RING SEALS | 1 | AUX320185 | ■ | |
| 39113 | | SEAL | (1) | | | ● |
| 39113A | | SEAL | (1) | | | ● |
| 39205 | | SEAL | (1) | | | ● |
| 39305 | | SEAL | (2) | | | ● |
| 39401 | ◆ | FRONT COVER COMPLETE | 1 | AUX320235 | | |

G-FLO 50 S

* 1, 2, 4... : Quantity in equipment - (1), (2), (4)... : Quantity in kit

| Item | Available | Description | Qty* | Ref. | Maintenance kit | Wear part |
|--------|-----------|--|------|-----------|-----------------|-----------|
| 39596 | ◆ | COMPLETE TRANSMISSION : WITHOUT BELLOWS MONITORING SYSTEM | 1 | AUX320115 | ■ | ● |
| 39596 | ◆ | WITH PRESSURE SWITCH BELLOWS MONITORING SYSTEM : WITH BMS ON THE LEFT | 1 | AUX320552 | ■ | ● |
| 39596 | ◆ | WITH BMS ON THE RIGHT | 1 | AUX320553 | ■ | ● |
| 39596 | ◆ | WITH BMS ATEX ON THE LEFT | 1 | AUX320556 | ■ | ● |
| 39596 | ◆ | WITH BMS ATEX ON THE RIGHT | 1 | AUX320557 | ■ | ● |
| 39008A | ◆ | SET PLUGS_LIFTING EYE BOLTS | 1 | AUX319682 | | |
| 39701 | | LIFTING EYE BOLTS | (1) | | | |
| 39715 | ◆ | BREATHER | 1 | AUX239151 | | ● |
| 39772 | | OIL LEVEL INDICATOR | (1) | | | |
| 39773 | | PLUG | (1) | | | |
| 39774 | | SEAL WASHER | (1) | | | ● |
| 39009A | ◆ | BEARING GASKETS _ RING SET | 1 | AUX320116 | | |
| 39498 | | BUSHING | (1) | | | |
| 39507 | | SEAL RING | (1) | | | ● |
| 39518 | | SEAL | (1) | | | ● |
| 39602 | | SEAL | (1) | | | ● |
| 39608 | | LIP SEAL | (1) | | | ● |
| 39608A | | LIP SEAL | (1) | | | ● |
| 39733 | | O-RING | (1) | | | ● |
| 39013 | | RADIAL SPRING KIT FOR SHAFT TRANSMISSION | (1) | | | |
| 39016 | ◆ | SCREWS SET FOR BELLOWS | 1 | AUX319677 | | |
| 39529 | | SCREW | (4) | | | |
| 39723 | | PIN | (1) | | | |
| 39017 | ◆ | SET BELLOWS | 1 | AUX320114 | | |
| 39018 | | BEARINGS KIT FOR TRANSMISSION | (1) | | | |
| 39500 | | SHAFT | (1) | | | |
| 39508 | | KEY | (1) | | | |
| 39607 | | COVER | (1) | | | |
| 39609 | | SCREW | (6) | | | |
| 39704 | | MAIN BODY SUPPORT | (1) | | | |
| 39736 | | BEARING | (1) | | | |

G-FLO 65 S

* 1, 2, 4... : Quantity in equipment - (1), (2), (4)... : Quantity in kit

| Item | Available | Description | Qty* | Ref. | Maintenance kit | Wear part |
|--------------|-----------|---|----------|------------------|-----------------|-----------|
| 39100 | ◆ | MAIN BODY G FLO 65 | 1 | AUX319927 | | |
| 39101 | | MAIN BODY | (1) | | | |
| 39108 | | FOOT | (1) | | | |
| 39109 | | SCREW | (2) | | | |
| 39118 | | INDEXER | (1) | | | |
| 39119 | | SCREW | (2) | | | |
| 39704A | | BRACKET | (1) | | | |
| 39110 | ◆ | SCREWS SET FOR MAIN BODY | 1 | AUX319937 | | |
| 39105 | | STUD | (6) | | | |
| 39106 | | BLIND NUT | (8) | | | |
| 39107 | | STUD | (2) | | | |
| 39111 | | STUD | (4) | | | |
| 39115 | | BLIND NUT | (4) | | | |
| 39410 | ◆ | KIT FLANGES PN16 | 1 | AUX319926 | | |
| 39410 | ◆ | KIT FLANGES PN20 | 1 | AUX319958 | | |
| 39136 | | SCREW | (6) | | | |
| 39148 | | ROD | (2) | | | |
| 39414 | | FLANGE | (2) | | | |
| 39200 | ◆ | SET CYLINDER_PISTON | 1 | AUX319913 | ■ | |
| 39201 | | CYLINDER | (1) | | | ● |
| 39210 | | SCREW | (1) | | | |
| 39301 | | PISTON | (1) | | | ● |
| 39304 | ◆ | PISTON NUT | 1 | AUX239099 | | ● |
| 39304A | | SCREW | (10) | | | |
| 39306 | | SCREW | (2) | | | |
| 39206 | ◆ | SET OF CVT 'O' RING SEALS | 1 | AUX319929 | ■ | |
| 39206 | ◆ | SET OF EPDM CE1935/2004 'O' RING SEALS | 1 | AUX319950 | ■ | |
| 39206 | ◆ | SET OF FKM CE1935/2004 'O' RING SEALS | 1 | AUX319945 | ■ | |
| 39113 | | SEAL | (1) | | | ● |
| 39113A | | SEAL | (1) | | | ● |
| 39205 | | SEAL | (1) | | | ● |
| 39305 | | SEAL | (2) | | | ● |
| 39401 | ◆ | FRONT COVER G FLO 65 | 1 | AUX319928 | | |
| 39596 | ◆ | COMPLETE TRANSMISSION | 1 | AUX319662 | ■ | ● |
| 39599 | | TRANSMISSION | (1) | | | |
| 39008A | ◆ | SET PLUGS_LIFTING EYE BOLTS | 1 | AUX319682 | | |
| 39701 | | LIFTING EYE BOLTS | (1) | | | |
| 39715 | ◆ | BREATHER | 1 | AUX239151 | | ● |
| 39772 | | OIL LEVEL INDICATOR | (1) | | | |
| 39773 | | PLUG | (1) | | | |
| 39774 | | SEAL WASHER | (1) | | | ● |
| 39009A | ◆ | BEARING GASKETS _ RING SET | 1 | AUX319683 | | ● |
| 39507 | | INTERNAL RING | (1) | | | ● |
| 39516 | | CIRCLIPS | (1) | | | |
| 39518 | | O-RING FKM | (1) | | | ● |
| 39602 | | SEAL | (1) | | | |
| 39608 | | LIP SEAL | (1) | | | ● |
| 39608A | | LIP SEAL | (1) | | | ● |
| 39733 | | SEAL | (1) | | | ● |
| 39013 | | RADIAL SPRING KIT FOR SHAFT TRANSMISSION | (1) | | | |
| 39016 | ◆ | SCREWS SET FOR BELLOWS | 1 | AUX319677 | | |
| 39529 | | SCREW | (4) | | | |
| 39723 | | PIN | (1) | | | |
| 39017 | ◆ | SET BELLOWS | 1 | AUX319679 | | |
| 39018 | | BEARINGS KIT FOR TRANSMISSION | (1) | | | |
| 39500 | | SHAFT COMPLETE | (1) | | | |
| 39508 | | KEY | (1) | | | |
| 39607 | | BEARING COVER | (1) | | | |
| 39609 | | SCREW | (6) | | | |
| 39704 | | MAIN BODY SUPPORT | (1) | | | |
| 39736 | | BEARING | (1) | | | |

G-FLO 65 HP

* 1, 2, 4... : Quantity in equipment - (1), (2), (4)... : Quantity in kit

| Item | Available | Description | Qty* | Ref. | Maintenance kit | Wear part |
|--------------|-----------|---|----------|------------------|-----------------|-----------|
| 39100 | ◆ | MAIN BODY G FLO 65 | 1 | AUX319927 | | |
| 39101 | | MAIN BODY | (1) | | | |
| 39108 | | FOOT | (1) | | | |
| 39109 | | SCREW | (2) | | | |
| 39118 | | INDEXER | (1) | | | |
| 39119 | | SCREW | (2) | | | |
| 39704A | | BRACKET | (1) | | | |
| 39110 | ◆ | SCREWS SET FOR MAIN BODY | 1 | AUX319937 | | |
| 39105 | | STUD | (6) | | | |
| 39106 | | BLIND NUT | (8) | | | |
| 39107 | | STUD | (2) | | | |
| 39111 | | STUD | (4) | | | |
| 39115 | | BLIND NUT | (4) | | | |
| 39410 | ◆ | KIT FLANGES PN16 | 1 | AUX319926 | | |
| 39410 | ◆ | KIT FLANGES PN20 | 1 | AUX319958 | | |
| 39136 | | SCREW | (6) | | | |
| 39148 | | ROD | (2) | | | |
| 39414 | | FLANGE | (2) | | | |
| 39200 | ◆ | SET CYLINDER_PISTON | 1 | AUX319947 | ■ | |
| 39201 | | CYLINDER | (1) | | | ● |
| 39210 | | SCREW | (1) | | | |
| 39301 | | PISTON | (1) | | | ● |
| 39304 | ◆ | PISTON NUT | 1 | AUX239099 | | ● |
| 39304A | | SCREW | (10) | | | |
| 39306 | | SCREW | (2) | | | |
| 39206 | ◆ | SET OF CVT 'O' RING SEALS | 1 | AUX319929 | ■ | |
| 39206 | ◆ | SET OF EPDM CE1935/2004 'O' RING SEALS | 1 | AUX319950 | ■ | |
| 39206 | ◆ | SET OF FKM CE1935/2004 'O' RING SEALS | 1 | AUX319945 | ■ | |
| 39113 | | SEAL | (1) | | | ● |
| 39113A | | SEAL | (1) | | | ● |
| 39205 | | SEAL | (1) | | | ● |
| 39305 | | SEAL | (2) | | | ● |
| 39401 | ◆ | FRONT COVER G FLO 65 | 1 | AUX319928 | | |
| 39596 | ◆ | COMPLETE TRANSMISSION | 1 | AUX319662 | ■ | ● |
| 39599 | | TRANSMISSION | (1) | | | |
| 39008A | ◆ | SET PLUGS_LIFTING EYE BOLTS | 1 | AUX319682 | | |
| 39701 | | LIFTING EYE BOLTS | (1) | | | |
| 39715 | ◆ | BREATHER | 1 | AUX239151 | | ● |
| 39772 | | OIL LEVEL INDICATOR | (1) | | | |
| 39773 | | PLUG | (1) | | | |
| 39774 | | SEAL WASHER | (1) | | | ● |
| 39009A | ◆ | BEARING GASKETS _ RING SET | 1 | AUX319683 | | ● |
| 39507 | | INTERNAL RING | (1) | | | ● |
| 39516 | | CIRCLIPS | (1) | | | |
| 39518 | | O-RING FKM | (1) | | | ● |
| 39602 | | SEAL | (1) | | | |
| 39608 | | LIP SEAL | (1) | | | ● |
| 39608A | | LIP SEAL | (1) | | | ● |
| 39733 | | SEAL | (1) | | | ● |
| 39013 | | RADIAL SPRING KIT FOR SHAFT TRANSMISSION | (1) | | | |
| 39016 | ◆ | SCREWS SET FOR BELLOWS | 1 | AUX319677 | | |
| 39529 | | SCREW | (4) | | | |
| 39723 | | PIN | (1) | | | |
| 39017 | ◆ | SET BELLOWS | 1 | AUX319679 | | |
| 39018 | | BEARINGS KIT FOR TRANSMISSION | (1) | | | |
| 39500 | | SHAFT COMPLETE | (1) | | | |
| 39508 | | KEY | (1) | | | |
| 39607 | | BEARING COVER | (1) | | | |
| 39609 | | SCREW | (6) | | | |
| 39704 | | MAIN BODY SUPPORT | (1) | | | |
| 39736 | | BEARING | (1) | | | |